

The slide features a purple gradient background with abstract patterns of white dots and overlapping circles. A central purple circle contains the text 'Unédic' and 'Investor Presentation'. To the left of this circle are three smaller overlapping circles in teal, orange, and purple. In the bottom right corner, there is a white logo consisting of a stylized 'A' above the word 'Unédic'.

Unédic

Investor Presentation

February 2012


Unédic



Unédic at a glance

- Unédic is the public related entity in charge of managing the compulsory French unemployment insurance system:
 - Strategic role within the French Welfare system
 - The law has mandated the main trade unions and employers' organizations (social partners) to manage the compulsory unemployment insurance system
 - The system is managed by Unédic, established in 1958 by the social partners as a non-profit organization

- Key financial facts:
 - AAA, Aaa rating of Unédic by rating agencies Moody's and Fitch, AA+ by Standard & Poor's
 - 0% risk weighted under Basel II and ECB eligible
 - Debt issued by Unédic is consolidated in that of the Republic of France (Maastricht criteria)
 - Unédic distributes about €28 bn per year in unemployment benefits





Table of content

Statute and Governance

Organization and Mission

Financial conditions

Capital markets activities





Unédic is the public related entity in charge of managing the compulsory unemployment insurance system in France

- The law has mandated the main trade unions and employers' organizations (social partners) to manage the compulsory unemployment insurance system
- The system is managed by Unédic, established in 1958 by the social partners as a non-profit organization
- The law requires that both employees and employers must pay salary-based contributions to Unédic
- In 2011, the system covered 16.5 million people out of 26 million active workers. Civil servants and entrepreneurs are excluded.





Unédic is closely related to the government

- Unédic operates in a strictly regulated environment :
 - Unemployment policies are designed by the social partners, and are formally approved by the Government
 - The law lays out that the unemployment insurance system is compulsory

- Whilst not part of the public administration, Unédic benefits from strong state support:
 - Under exceptional circumstances, such as financial distress, the Government would step in to ensure the continuity of the national unemployment insurance system





The governance of Unédic

- Unédic's Board is composed of representatives from the social partners:
 - Representatives from the 3 main employers' organizations : Medef, CGPME, UPA
 - Representatives from the 5 main trade unions : CFDT, CFE-CGC, CFTC, CGT, CGT-FO
- Trade unions and employer's organizations are equally represented
- The government is represented on Unédic's board
- The Board:
 - Meets regularly (usually once a month)
 - Authorizes borrowing programs, if any
 - Approves annual financial statements



Table of content

Organization and Mission

Statute and Governance

Financial conditions

Capital markets activities





Unédic holds a strategic position in the French Public Service of Employment

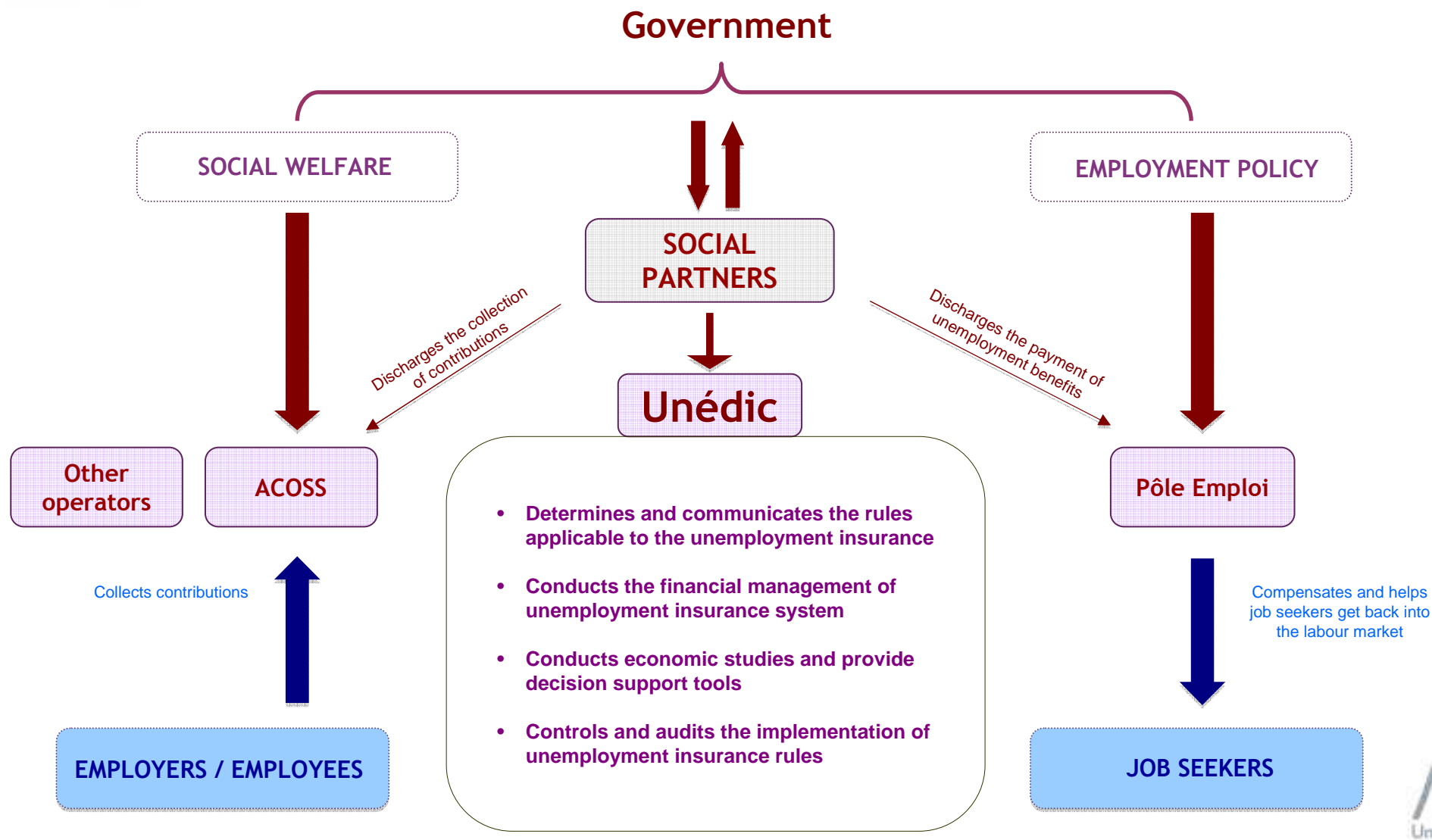




Table of content

Financial conditions

Statute and Governance

Organization and Mission

Capital markets activities





Unédic's financials are closely linked to the macroeconomic situation

- Financials of Unédic are very cyclical:
 - The current economic situation and rising unemployment in France are weakening Unédic's balance sheet due to higher benefit disbursements and lower contribution levels
 - Thus, after 3 consecutive years of surpluses we see the insurance scheme has shifted into a period of deficit

Years	2007	2008	2009	2010	2011	2012
Net outstanding debt at year end (€ bn)	9.7	4.7	5.6	8.5	11*	15.4*

*2011 estimate, 2012 projection

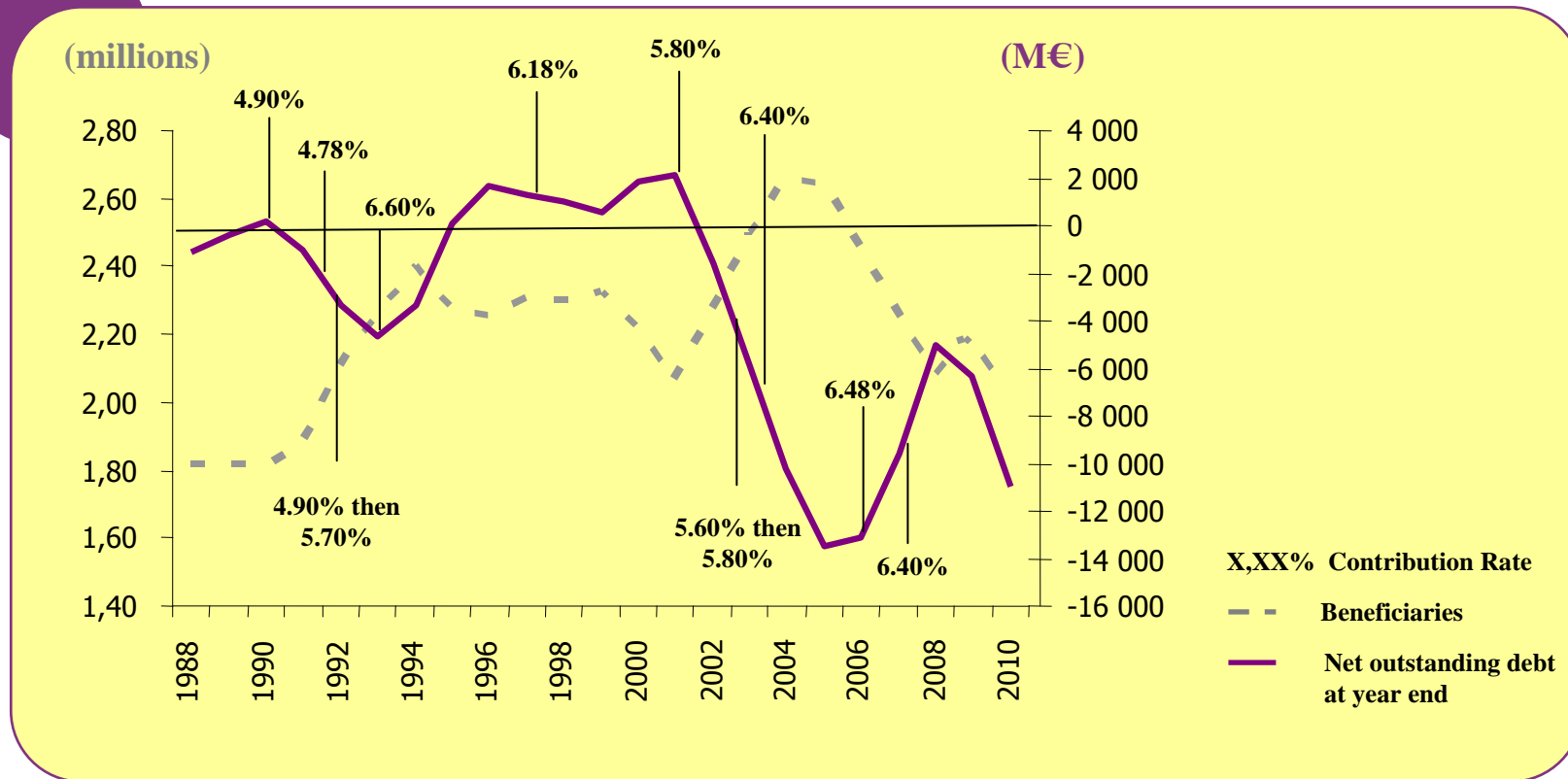
- Therefore, Unédic's financial forecasts are based on strong economic analysis, using robust economic models and reliable data sources:
 - Financial forecasts are regularly monitored
 - Financial forecasts represent a major input in Unédic's cash management policy decisions





The Board monitors Unédic's revenues and debt levels

- 2 types of adjustments can be made to address the financial situation:
 - Change in the contribution rate (fixed percentage of salary paid as unemployment insurance premium)
 - Change in the level of unemployment benefits





Unédic has implemented conservative and prudent liquidity policies

- Access to a mix of cost efficient resources from capital markets in order to address Unédic's needs and efficiently manage the interest rate exposure
 - EMTN Program
 - CP Program

- Rigorous management of the CP Program
 - Benchmarking of duration and maturity split
 - Setting of back-up lines
 - Equivalent of 2 months' worth of liquidity as a buffer against market disruption

- Prudent risk management framework:
 - No currency risk: all borrowings are denominated in Euro
 - Control of interest rate : mix of long term and short term financing instruments
 - Exposure to bank counterparties is regularly monitored





Table of content

Statute and Governance

Organization and Mission

Financial conditions

Capital markets activities





Unédic's funding objectives

- Fund the annual deficit, if any, between the collection of contributions and the payment of unemployment benefits
- Provide cost efficient resources



Unédic funding instruments overview

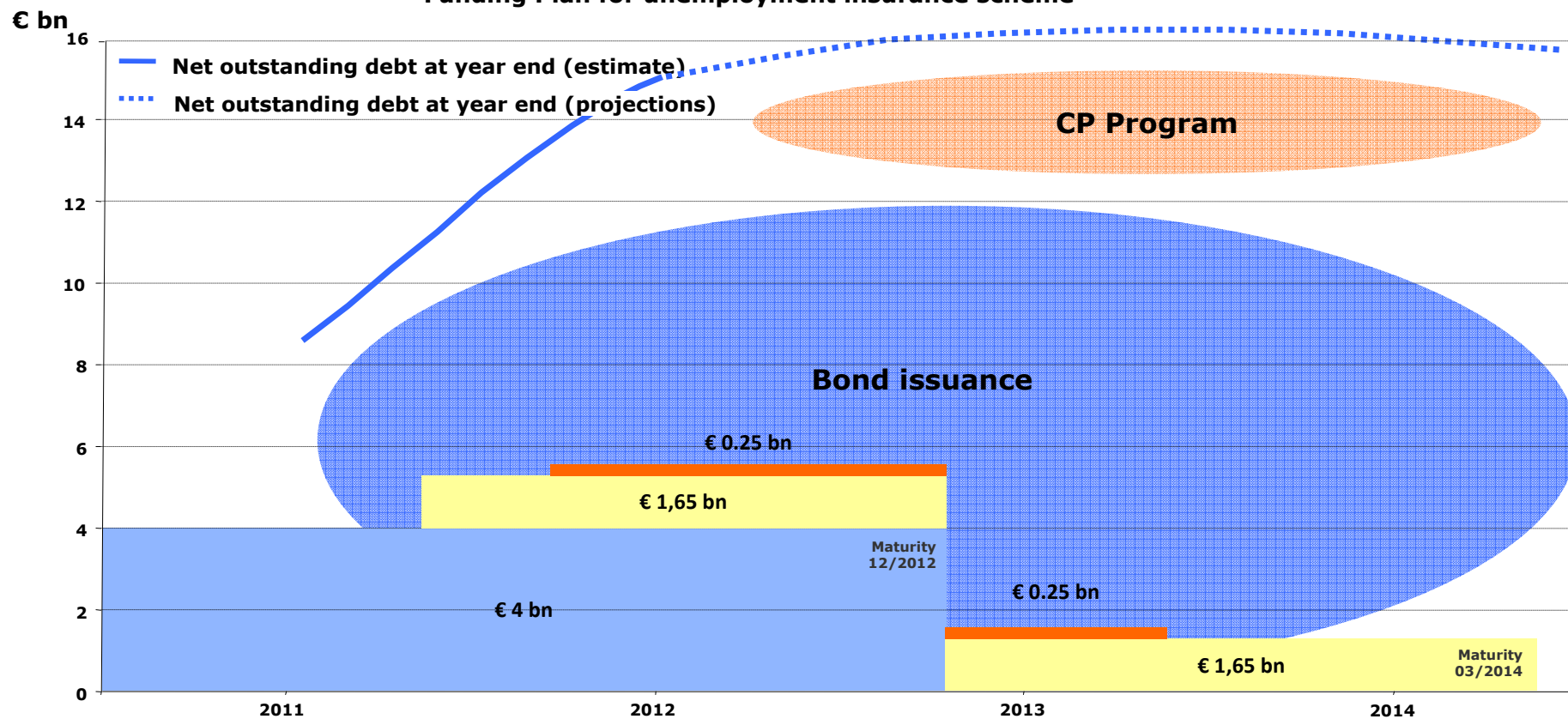
EMTN Programme

- € 14 bn size
- Institutional investors targeted
- Public benchmark approach
- Proceeds on a fixed rate basis

Commercial Paper Programme

- € 12 bn size
- Active management

Funding Plan for unemployment insurance scheme





Explicit State Guarantee

- The Monetary and Financial Code is strongly constraining for associations issuing bonds (art. L213-15)
- The current legal framework (Loi de Finances Rectificative 30/12/2004 art.107) entails that a state guarantee would overcome these constraints
- Unédic, while awaiting for the pending change of the Monetary and Financial Code, sought and obtained the explicit guarantee from French Minister of the Economy, Finance and Employment
- Every bond issued by Unédic in 2012 will receive explicit state guarantee from the French Republic



The bonds (obligations) issued by Unedic in 2012 approved by the decision of its board of directors, will benefit from the unconditional and irrevocable first demand guarantee of the French State. The guarantee is granted for borrowings up to a maximum global amount of Euro 7 billion in principal, plus any interests and fees related thereto.



- Unédic is currently the only public entity benefiting from explicit French guarantee





2012 issuance strategy

- Unedic has planned to issue up to €7bn in 2012
- Stand alone issuer is respectively rated AAA, Aaa and AA+ by Fitch Rating, Moody's Investors Service and Standard & Poor's. The issuance will take place within the framework of a rated EMTN program (AAA, Aaa, AA+)



Unédic is rated AAA by Moody's Investors Service and Fitch Ratings and AA+ by Standard & Poor's

STANDARD & POOR'S

" [...] During its more than four decades of existence, Unédic has never experienced a loss of investor confidence in its credit quality.

"



Moody's Investors Service

" [...] the base credit assessment is also underpinned by the high level of comfort provided by Unedic's special status and its strictly regulated institutional framework.

"

Fitch Ratings

" The ratings on Unédic reflect its mission as the sole manager of the French unemployment insurance system, its close supervision by the state and its prudent financial management.

"





For more information, feel free to contact us and visit our website



Unédic
4 rue Traversière
75 012 Paris
France

Phone : +33 1 44 87 64 00
Fax : +33 1 46 28 04 71

www.unedic.org

Contact :

Philippe Eberschweiler,
Chief Financial Officer
Email : investors@unedic.fr
Phone : +33 1 44 87 64 47

For more information,
visit www.unedic.org





Disclaimer

This document is a draft for discussion purposes only, it is highly confidential and proprietary and should not be transmitted to any person other than its original addressee(s) without the prior written consent of Unédic. Prices and margin are meant to be indicative only and are subject to change at any time depending on market conditions. Unédic cannot be held responsible for any financial loss or other consequences of the implementation of the transactions described in this document. The French Autorité des Marchés financiers granted its visa under number 12-060 dated 13 February 2012 with respect to a base prospectus (hereinafter referred to as the “Base Prospectus”) which details this operation. The Base Prospectus is available at no cost at Unédic registered office, 4, rue de Traversière, 75012 Paris, France and on its website www.unedic.org. You are invited to report to the section “risks” of the Base Prospectus before taking a decision with respect to the implementation of the transactions described in this document or in the Base Prospectus. Should you so require, you should contact your financial, legal or tax advisor, or any other specialist, in order to confirm that any decision taken is consistent with your personal financial situation.

Ce document est la présentation d'une opération à des fins de discussion, ce document est confidentiel et les informations qu'il contient sont la propriété de l'Unédic et ne saurait être transmis à quiconque sans l'accord préalable et écrit de l'Unédic. Les informations de prix et/ou de marges sont indicatifs et sont susceptibles d'évolution à tout moment, notamment en fonction des conditions de marché. L'Unédic ne saurait être tenue responsable des conséquences d'une quelconque décision prise au regard des éléments d'une transaction décrite dans le présent document. L'Autorité des Marchés financiers a apposé le visa n° 12-060 en date du 13 février 2012 sur un prospectus de base (ci-après le « Prospectus de Base ») présentant cette opération. Le Prospectus de Base est disponible sans frais au siège de l'Unédic, 4, rue Traversière, 75012 Paris et sur le site internet www.unedic.org. Vous êtes invité à lire la rubrique « facteurs de risques » du Prospectus de Base avant toute décision prise au regard des éléments d'une transaction décrite dans le présent document ou dans le Prospectus de Base. En tout état de cause, il vous appartient de requérir, si nécessaire, les avis internes et / ou externe de la part de juristes, fiscalistes ou analystes financier pour vérifier de l'adéquation de cette transaction avec les objectifs et contraintes de votre groupe.

